

HAITI DISASTER RELIEF PROJECT
January 13, 2010 to March 31, 2010



Accountant
Frantz Bourget
May 15, 2010

Haiti Disaster Relief Project
Donation & Expense Statement
For Period Ending March 31, 2010

Donations \$23,905

Expenses

Direct Aid	\$1,000
Gasoline	1,250.15
Labor	1,700.00
Meals	172.22
Misc	96.59
Office Expense	456.77
Parking	41.50
Processing Fees	188.00
Shipping	3,933.00
Supplies	2,342.49
Telephone	41.26
Toll	0.50
Distribution Travel	11,342.15
Distribution Truck Rental	1,439.71
Other	<u>4.95</u>

Total Expense 24,009

Remaining Fund (\$104)

Haiti Disaster Relief Project - Cash Donation Schedule
 From January 15, 2010 through March 31, 2010

Date	Amount	Total	Acct	Source
15-Jan-10	50.00		MA	WB
15-Jan-10	480.00		MA	WB
19-Jan-10	225.00		MA	WB
19-Jan-10	400.00		MA	WB
19-Jan-10	575.00		MA	WB
19-Jan-10	860.00		MA	WB
19-Jan-10	1,565.00		MA	WB
19-Jan-10	750.00		SA	CD
20-Jan-10	600.00		MA	CD
20-Jan-10	415.00		MA	WB
21-Jan-10	100.00		MA	WB
21-Jan-10	565.00		MA	WB
21-Jan-10	1,000.00		SA	CD
22-Jan-10	475.00		MA	CD
22-Jan-10	335.00		MA	WB
25-Jan-10	72.00		MA	WB
25-Jan-10	130.00		MA	WB
25-Jan-10	175.00		MA	WB
25-Jan-10	625.05		MA	WB
26-Jan-10	30.00		MA	WB
26-Jan-10	75.00		MA	WB
27-Jan-10	510.00		MA	WB
28-Jan-10	246.00		MA	WB
29-Jan-10	30.00	10,288.05	MA	WB
1-Feb-10	100.00		MA	CD
1-Feb-10	300.00		MA	WB
1-Feb-10	110.00		MA	WB
1-Feb-10	30.00		MA	WB
2-Feb-10	70.00		MA	WB
3-Feb-10	2,062.00		MA	CD
3-Feb-10	50.00		MA	CD
3-Feb-10	30.00		MA	WB
5-Feb-10	30.00		MA	WB
8-Feb-10	770.00		MA	WB
8-Feb-10	145.00		MA	WB
9-Feb-10	2,500.00		MA	WB
9-Feb-10	367.00		SA	CD
10-Feb-10	70.00		SA	CD
11-Feb-10	100.00		MA	CD
12-Feb-10	50.00		MA	WB
16-Feb-10	172.50		MA	WB
16-Feb-10	50.00		MA	WB
16-Feb-10	30.00		MA	WB
16-Feb-10	3,412.00		SA	CD
18-Feb-10	30.00		MA	WB
19-Feb-10	420.00		SA	CD
22-Feb-10	52.00		MA	CD

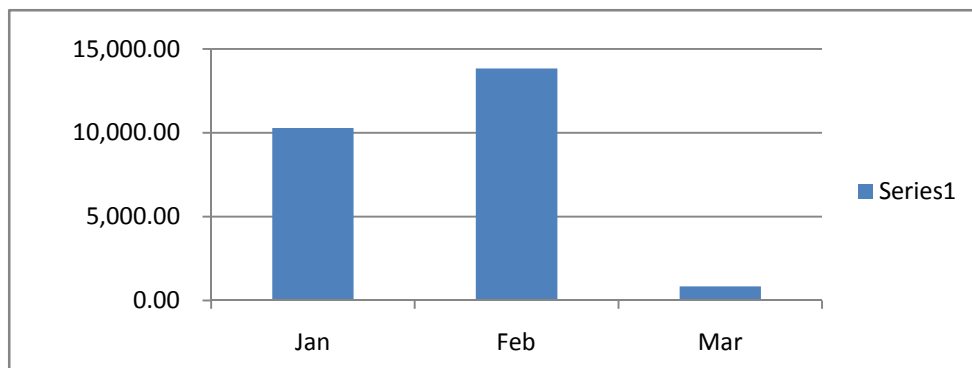
Haiti Disaster Relief Project - Cash Donation Schedule
 From January 15, 2010 through March 31, 2010

22-Feb-10	25.00		MA	WB
22-Feb-10	944.00		PC	
23-Feb-10	500.00		SA	CD
24-Feb-10	1,150.00		MA	CD
24-Feb-10	65.00		MA	WB
26-Feb-10	100.00		MA	CD
26-Feb-10	100.00	13,834.50	MA	WB
2-Mar-10	230.00		MA	WB
3-Mar-10	50.00		MA	WB
5-Mar-10	50.00		MA	WB
5-Mar-10	121.00		SA	CD
8-Mar-10	20.00		MA	WB
9-Mar-10	50.00		MA	WB
9-Mar-10	10.00		SA	CD
10-Mar-10	70.00		MA	WB
15-Mar-10	22.00		MA	WB
15-Mar-10	50.00		MA	WB
16-Mar-10	17.00		MA	WB
17-Mar-10	122.50		MA	WB
25-Mar-10	20.00	832.50	MA	WB

Total Deposits in both Accounts		24,955.05
Membership Dues Received	less:	1,050.00
Total Donation for Relief		<u>23,905.05</u>

Analysis

	855.00	Jan	Feb	Mar
Total Donation		10,288.05	13,834.50	832.50
Average		428.67	461.15	64.04
Maximun		1,565.00	3,412.00	230.00
Median		407.50	100.00	50.00



Donation of \$2,000 or more

Haiti Disaster Relief Project - Expense Schedule by Responsibility Center
 From January 13, 2010 through March 31, 2010

Row Labels	Sum of Amount	
Administration	6,931.00	
Airfare to Haiti	2,592.56	
For Traveling exp to Haiti	500.00	
Monthly fees	188.00	
Processing fees	11.94	
Soup Kitchen	1,000.00	
ticket for JFV through DR to Haiti	603.00	
To cover expenses while in Haiti	2,000.00	
Toll	0.50	
Transportation	35.00	
Collection	1,251.68	A
40 Signs	283.12	
Badges	11.65	
Labels	100.00	
Pizza for Packers	67.00	
Transportation	780.37	
(blank)	9.54	
Collections	1,870.63	A
1-800 number	41.26	
Airfare to Haiti	348.80	
Blade	2.63	
Breakfast	26.72	
Lunch	37.01	
Rubber Bands	5.39	
Shipping Labels	150.00	
Shrink Wrap	47.09	
Tape	15.81	
Transportation	1,066.71	
Utility knife, Pro Marker	39.21	
Various	90.00	
Distribution	9,648.79	
Airfare to Haiti	729.80	
Container fees	3,933.00	
Deposit on 36 T-Shirts	80.00	
Final Payment for T-Shirts	82.00	
For Traveling exp to Haiti	500.00	
Label Maker Software	213.99	
Parking	9.00	
Ticket for FB through DR to Haiti	561.00	
To cover expenses while in Haiti	3,500.00	
Transportation	40.00	
Warehouse	4,307.19	
Boxes & Containers	293.41	
Boxes & Tapes	15.81	
Cards	13.35	
Ink for Printer	52.99	
Lunch	26.51	
Lunch for Warehouse Staff	14.98	
		Sum of A
		3,122.31

Haiti Disaster Relief Project - Expense Schedule by Responsibility Center
From January 13, 2010 through March 31, 2010

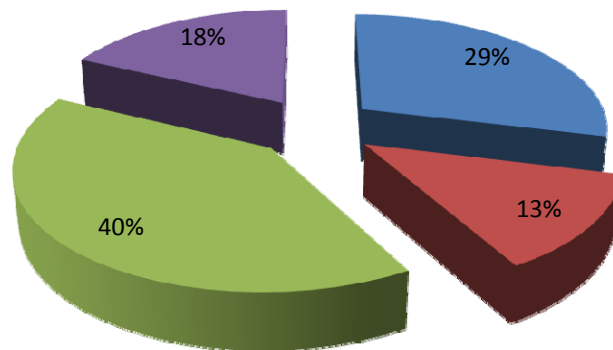
Mask & Gloves	67.00
Meeting with Mayor's Office	3.00
Meeting with Pilot	9.00
Shipping Boxes	615.59
Sorting & Packing Boxes	1,700.00
Tapes	594.03
Tapes, Bins	106.65
Transportation	790.37
(blank)	4.50
Grand Total	24,009.29

Haiti Disaster Relief Project
Expense Schedule by Responsibility Center
From January 13, 2010 through March 31, 2010

Responsibility Center	Amount
Administration	\$ 6,931.00
Collection	\$ 3,122.31
Distribution	\$ 9,648.79
Warehouse	\$ 4,307.19
Grand Total	<u>\$ 24,009.29</u>

Expense by Responsibility Center

■ Administration ■ Collection ■ Distribution ■ Warehouse



Haiti Disaster Relief Project - Expenses by Category
 From January 13, 2010 through March 31, 2010

Row Labels	Sum of Amount
Direct Aid	1,000.00
Soup Kitchen	1,000.00
Gas	1,250.15
Transportation	1,250.15
Labor	1,700.00
Sorting & Packing Boxes	1,700.00
Meals	172.22
Breakfast	26.72
Lunch	63.52
Lunch for Warehouse Staff	14.98
Pizza for Packers	67.00
Misc	96.59
Transportation	6.59
Various	90.00
Office Expense	456.77
40 Signs	283.12
Badges	11.65
Deposit on 36 T-Shirts	80.00
Final Payment for T-Shirts	82.00
Parking	41.50
Meeting with Mayor's Office	3.00
Meeting with Pilot	9.00
Parking	9.00
Transportation	16.00
(blank)	4.50
Processing Fees	188.00
Monthly fees	188.00
Shipping	3,933.00
Container fees	3,933.00
Supplies	2,342.49
Blade	2.63
Boxes & Containers	293.41
Boxes & Tapes	15.81
Cards	13.35
Ink for Printer	52.99
Label Maker Software	213.99
Labels	100.00
Mask & Gloves	67.00
Rubber Bands	5.39
Shipping Boxes	615.59
Shipping Labels	150.00
Shrink Wrap	47.09
Tape	15.81
Tapes	594.03
Tapes, Bins	106.65
Utility knife, Pro Marker	39.21
(blank)	9.54

Haiti Disaster Relief Project - Expenses by Category
From January 13, 2010 through March 31, 2010

Telephone	41.26
1-800 number	41.26
Toll	0.50
Toll	0.50
Travel	11,342.15
Airfare to Haiti	3,671.16
For Traveling exp to Haiti	1,000.00
Processing fees	6.99
Ticket for FB through DR to Haiti	561.00
ticket for JFV through DR to Haiti	603.00
To cover expenses while in Haiti	5,500.00
Truck Rental	1,439.71
Transportation	1,439.71
(blank)	4.95
Processing fees	4.95
Grand Total	24,009.29